

Luitpold Pharmaceuticals, Inc. Animal Health Division

FOR IMMEDIATE RELEASE

Contacts:

Allyn Mann, Luitpold Product Manager
amann@luitpold.com

Or Mary Jane Duff
(816) 891-8845
mjduff@theduffcompany.com

Balanced wear-and-repair cycle is key to healthy equine joints

During routine activity horses' joints are in a constant state of "wear and repair" that maintains the lubrication and prevents cartilage destruction.

As normal forces of the horse's movement are exerted on the joint, cells are actively regenerating and repairing the components of damaged cartilage while replacing the synovial fluid in the joint. This constant renewal, repair and replacement cycle assures that no cartilage loss occurs and a functionally balanced, healthy joint is maintained. If the natural balance of a joint is disrupted from daily use, a misstep or incorrect shoeing, the joint can become dysfunctional and susceptible to non-infectious degenerative joint disease, often called osteoarthritis.

The disease most commonly affects the hocks and coffin joints, with the most severe effects on the high-motion knee and fetlock joints. When the wear on the joint exceeds the normal repair and replenishment process, destructive enzymes attack the synovial fluid and the cartilage. Eroded cartilage allows damage to the subchondral bone.

Early signs of degenerative joint disease, often called osteoarthritis, are subtle, so owners should monitor their horse's legs for joint swelling, heat, hesitation to perform usual tasks or lameness. By the time these symptoms appear, joint damage may have begun.

Early detection and treatment can limit the damage and restore balance in the joints before permanent cartilage or bone damage occurs.

When these symptoms appear, contact your veterinarian for an examination, diagnosis and early treatment will help restore the natural balance to your horse's joints.

"Studies have shown that polysulfated glycosaminoglycan, known as Adequan[®] i.m., helps horses get back to a natural 'wear and repair' cycle for improved joint function," says Dr. Victoria Maxwell, technical service veterinarian for Luitpold Pharmaceuticals, Inc. While proven to nearly double the hyaluronic acid (HA) in the synovial fluid of the joint, she says, "Polysulfated glycosaminoglycan also stimulates cartilage repair and reverses traumatic joint dysfunction."

"The parameters veterinarians, trainers and horse owners are looking for in joint therapy include stride length, knee flexion and lameness score. The FDA has approved a way of mimicking arthritis in the horse that is even more severe than what we see in an equine patient, and that was the design of this test," reports Dr. Gary White from Sallisaw

Equine Clinic in Oklahoma about a randomized, blinded positive-controlled study he conducted with Adequan® i.m. (POLYSULFATED GLYCOSAMINOGLYCAN).

The intramuscular injections were given every four days for seven treatments. The Adequan i.m. treated horses showed the following results:

- **Stride length.** 98 percent improvement.
- **Knee flexion.** 95 percent improvement
- **Lameness score.** 88 percent improvement

Recent confusion in the marketplace has led people to believe that there are generic and FDA-approved equivalents of Adequan i.m., Dr. White says. “But, there are no FDA-approved forms of generic Adequan i.m.. The FDA approval process is demanding and designed to protect you, your horse and your finances from unproven and unsafe products,” he adds.

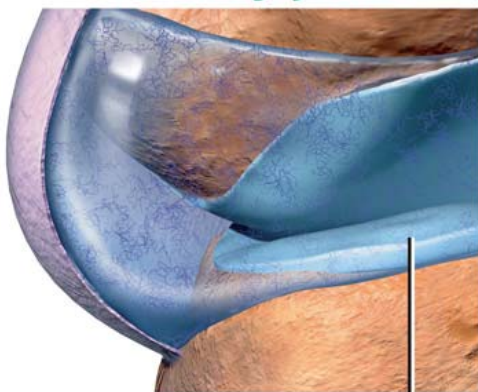
Despite the overwhelming choices for joint therapy today, there is still only one FDA approved product for osteoarthritis or degenerative joint disease (DJD) for horses and that is Adequan i.m., reports Dr. White. “The treatment remains unparalleled in its effectiveness and safety.”

###

Luitpold Pharmaceuticals, Inc. Animal Health Division based in Shirley, N.Y., markets Adequan® i.m., Adequan® i.a. (POLYSULFATED GLYCOSAMINOGLYCAN) and Equiphen® Paste (PHENYBUTAZONE) for horses. The company is committed to advancing the cause of equine health. For more information about products from Luitpold Animal Health visit www.luitpoldanimalhealth.com.

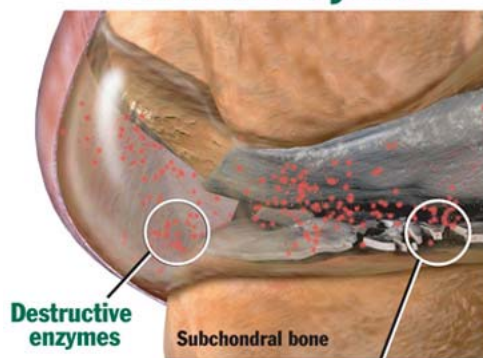
Adequan is a registered trademark of Luitpold Pharmaceuticals, Inc.

Healthy joint



Healthy cartilage is critical to the performance of the joint.

Diseased joint



Eroded cartilage allows:

- damage to the subchondral bone
- less ability to absorb shock

